



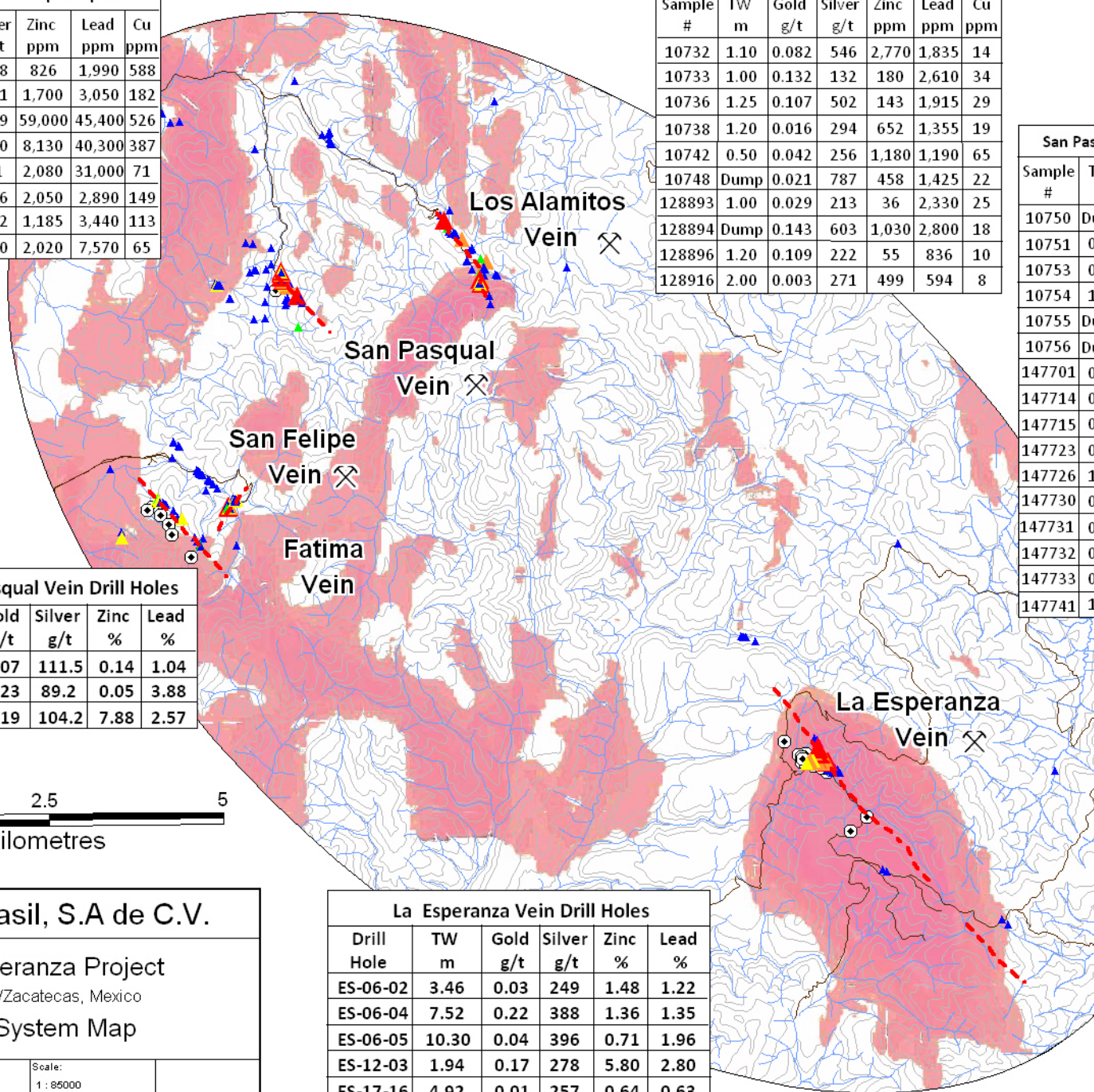
San Felipe Vein, Chip & Dump Samples						
Sample #	TW m	Gold g/t	Silver g/t	Zinc ppm	Lead ppm	Cu ppm
10772	Dump	0.038	588	826	1,990	588
10773	1.00	0.051	591	1,700	3,050	182
10780	Dump	0.020	109	59,000	45,400	526
128960	0.40	0.080	110	8,130	40,300	387
147783	0.80	0.049	81	2,080	31,000	71
147809	0.80	0.029	606	2,050	2,890	149
147810	0.70	0.076	372	1,185	3,440	113
147811	0.50	0.038	120	2,020	7,570	65

Los Alamitos Vein, Chip & Dump Samples						
Sample #	TW m	Gold g/t	Silver g/t	Zinc ppm	Lead ppm	Cu ppm
10732	1.10	0.082	546	2,770	1,835	14
10733	1.00	0.132	132	180	2,610	34
10736	1.25	0.107	502	143	1,915	29
10738	1.20	0.016	294	652	1,355	19
10742	0.50	0.042	256	1,180	1,190	65
10748	Dump	0.021	787	458	1,425	22
128893	1.00	0.029	213	36	2,330	25
128894	Dump	0.143	603	1,030	2,800	18
128896	1.20	0.109	222	55	836	10
128916	2.00	0.003	271	499	594	8

San Pasqual Vein, Chip & Dump Samples						
Sample #	TW m	Gold g/t	Silver g/t	Zinc ppm	Lead ppm	Cu ppm
10750	Dump	0.40	256	4,720	8,920	160
10751	0.60	0.272	398	221	5,610	342
10753	0.50	0.093	327	49,100	4,160	528
10754	1.20	0.035	405	1,230	3,340	134
10755	Dump	0.078	150	566	2,030	64
10756	Dump	0.096	152	4,940	1,560	186
147701	0.60	0.315	1,135	349	13,550	465
147714	0.30	0.076	566	3,630	29,300	458
147715	0.40	0.114	422	765	4,330	111
147723	0.50	0.003	165	1,615	1,470	149
147726	1.00	0.098	748	1,050	15,500	418
147730	0.60	0.092	427	5,570	1,575	65
147731	0.60	0.193	504	6,400	2,220	103
147732	0.60	0.189	446	10,000	3,710	77
147733	0.60	0.215	788	9,990	5,160	168
147741	1.00	0.014	561	2,310	2,370	93

Fatima and San Pasqual Vein Drill Holes					
Drill Hole	TW m	Gold g/t	Silver g/t	Zinc %	Lead %
FA-12-05	1.84	0.07	111.5	0.14	1.04
FA-12-07	1.72	0.23	89.2	0.05	3.88
SP-12-01	2.19	0.19	104.2	7.88	2.57

La Esperanza Vein Drill Holes					
Drill Hole	TW m	Gold g/t	Silver g/t	Zinc %	Lead %
ES-06-02	3.46	0.03	249	1.48	1.22
ES-06-04	7.52	0.22	388	1.36	1.35
ES-06-05	10.30	0.04	396	0.71	1.96
ES-12-03	1.94	0.17	278	5.80	2.80
ES-17-16	4.92	0.01	257	0.64	0.63
ES-17-17	5.81	0.10	204	1.83	1.46
ES-17-19	2.75	2.76	552	1.16	0.63



**Legend**

- Magnetic Anomaly
- Drill Hole Colar
- Historic Working
- Vein
- Road
- Drainage

Chip & Dump Sample  
Ag ppm

- over 500
- 250 to 500
- 100 to 250
- 50 to 100
- 0 to 50

**Minera Canasil, S.A de C.V.**

**La Esperanza Project**  
Durango/Zacatecas, Mexico  
**Vein System Map**



Date: Jun 13, 2017  
Scale: 1 : 85000  
Projection: UTM 13NAD27mex F13B33 & F13B34  
State / Province: Durango/Zacatecas  
Author: AS Canasil  
File: ESP\_PR\_13Jun17v2